

A. NOBLE & SON LTD.

World Class Lifting Solutions

SECTION 01



SERVICES



www.nobles.com.au

How Important are your Lifting Equipment Assets?

1. Are you having trouble keeping track of your critical lifting, height safety and lifted equipment assets ?
2. Do you know if these assets are being inspected and maintained in a safe and serviceable condition ?
3. Do you know how many lifting or height safety assets you have and what condition they are in ?
4. Do you know how many of each type of asset you have ?
5. Do you know which assets are on which site and where they are on the site ?
6. Do you know when they were last inspected ?
7. Do you know when they were last tested ?
8. Do you know where the current test certificate is ?
9. Are you concerned about the length of time it takes to get your report after an inspection is conducted ?
10. Can you find your report and is it current ?

**10 questions,
one answer:**



Lifting Equipment • Data Management

Nobles TECH INSPECT is a complete lifting equipment data management system that enables customers to view their lifting equipment on-line via a secure area of the Nobles website.

Tech Inspect is designed for use with lifting, height safety, lifted, mooring and load restraint equipment. Tech Inspect also offers various sorting and filtering criteria and allows the user to generate a high quality pdf report based on the chosen criteria.

Nobles lifting equipment inspectors attach a barcode to each item and use PDA Scanners to carry out on-site inspections. At the completion of the inspection the data is simply uploaded when the inspector returns to base.

The time lapse in waiting for reports and the need for paper reports is eliminated. The Tech Inspect register is always available on-line and in most cases is live the day after the inspection is completed.

To see a complete demonstration of the Tech Inspect system contact your nearest Nobles branch and ask for our demonstration CD-Rom

1. Nobles Inspector attaches a new barcode or scans existing barcode on lifting equipment
2. Specifications of the equipment is entered into the PDA (new registers) or checked (existing registers)
3. Status (Condition) of equipment is saved
4. Data is uploaded into the Nobles Tech Inspect system
5. Secure log-in and password is issued to customer
6. Customer can view their lifting equipment register on-line



Features available to Tech Inspect Users

1. Live on-line register which is always up to date
2. Complete history and detail of each asset is available
3. Attachments such as test certificates, CVI certificates, NDT certificates, pictures, etc can be held against each asset record and are accessible on-line to be viewed or printed as required
4. Data is secured daily by backup and will not be lost or outdated
5. Multiple data searching/sorting/filtering options including:
 - Search / Sort / Filter by Barcode
 - Search / Sort / Filter by ID Number
 - Search / Sort / Filter by Test Number
 - Search / Sort / Filter by Asset Status
 - Search / Sort / Filter by Equipment Type
 - Search / Sort / Filter by Location
6. The last and next inspection dates are displayed
7. Items are colour coded by asset status
8. Assets with a status of C, D or F include a comment of explanation
9. Ability to generate PDF reports for all of the above Search/Sort/Filter functions and print as required
10. Ability to view schedules for upcoming inspections and tests



1. Log-in via the Bulletin Board page.



2. Equipment list will appear with each item ordered by Barcode (default)
3. Various sorting/ searching and filtering criteria can be applied*
4. Equipment is colour coded by Status
5. Last Inspection Date and Next Inspection Date is listed on the front page

Barcode	ID Number	Equipment Type	Description	Location	Status	Last Insp	Next Insp
4782564	NCB01-006	Wire Rope Sing - Single Leg	14mm 6 x 26 IWRC 61770	Assembly Area	B	20/11/2009	01/02/2010
4782565	NCB01-007	Chain Sing - Multi Leg	Grade T 10mm x 2 leg, 3.5 t @ 60°	Assembly Area	B	25/03/2010	01/02/2010
4783968	NCB01-008	Wire Rope Sing - Single Leg	24mm 6x36 IWRC B1770 with Soft Eye Each End	Assembly Area	B	23/02/2010	01/02/2010
4783967	NCB01-004	Chain Sing - Multi Leg	Grade T 8mm x 2 leg, 3.5 t @ 60°	Assembly Area	B	25/03/2010	25/03/2010
4783966	NCB01-010	Wire Rope Sing - Single Leg	24mm 6x36 IWRC B1770 with Soft Eye Each End	Assembly Area	B	20/11/2009	01/02/2010
4783969	NCB01-011	Wire Rope Sing - Single Leg	24mm 6x36 IWRC B1770 with Soft Eye Each End	Assembly Area	B	20/11/2009	01/02/2010
4783970	NCB01-005	Wire Rope Sing - Single Leg	14mm 6 x 26 IWRC 61770 with Soft Eye Each End	Assembly Area	B	20/11/2009	01/02/2010
4783971	NCB01-003	Chain Sing - Multi Leg	Grade T 10mm x 2 leg, 3.5 t @ 60°	Assembly Area	B	25/03/2010	28/03/2010
4783972	NCB01-002	Chain Sing - Multi Leg	Grade T 10mm x 2 leg, 3.5 t @ 60°	Assembly Area	B	25/03/2010	28/03/2010
4783973	NCB01-007	Chain Sing - Multi Leg	Grade T 10mm x 2 leg, 3.5 t @ 60°	Assembly Area	A	20/11/2009	01/02/2010
4783974	NCB01-015	Concrete Lifting Cushion	SurfLIFT 10 01	Factory	B	25/03/2010	07/06/2010
4783975	NCB01-014	Crane	Carvt	Factory	B	25/03/2010	07/06/2010
4783976	NCB01-016	Crane	Gantry	Factory	B	07/10/2008	07/01/2010

* Easy to use menu of drop down boxes enables:

Sort/Search/Filter by:

- Barcode
- ID Number
- Equipment Type
- Status
- Test Cert Number
- Location (within the Site)
- In Ascending or Descending order

A. NOBLE & SON LTD.
TECH INSPECT
Lifting Equipment • Data Management

HOME | EQUIPMENT LIST | SIGN OUT

Welcome John Citizen.

MY LIFTING EQUIPMENT

Water/Customer Pty Ltd
46 Test Street
Dermoville, TC, 2635

Show/hide search options

Equipment Search: Barcode Inc Barcode
 Equipment Type:
 Status: All Locations
 Exclude disposed assets New Cert. No.
 ID Number

Search

Barcode	ID Number	Equipment Type	Description	Location	Status	Last Insp.	Next Insp.
4783884	NC801-008	Wire Rope Sling - Single Leg	14mm 6 x 36 IWRC G1770	Assembly Area	B	20/11/2008	01/02/2010
4783885	NC801-009	Wire Rope Sling - Multi Leg	24mm 6 x 36 IWRC B 1770 with Soft Eye Each End	Assembly Area	B	23/02/2010	01/02/2010
4783886	NC801-008	Wire Rope Sling - Single Leg	24mm 6x36 IWRC B 1770 with Soft Eye Each End	Assembly Area	B	25/03/2010	25/03/2010
4783887	NC801-004	Chain Sling - Multi Leg	Grade T 8mm x 2 leg 3.5 t @ 90°	Assembly Area	B	20/11/2008	01/02/2010
4783888	NC801-010	Wire Rope Sling - Single Leg	24mm 6x36 IWRC B 1770 with Soft Eye Each End	Assembly Area	B	20/11/2008	01/02/2010
4783889	NC801-011	Wire Rope Sling - Single Leg	24mm 6x36 IWRC B 1770 with Soft Eye Each End	Assembly Area	B	20/11/2008	01/02/2010
4783890	NC801-012	Wire Rope Sling - Single Leg	24mm 6x36 IWRC B 1770 with Soft Eye Each End	Assembly Area	B	20/11/2008	01/02/2010
4783891	NC801-003	Chain Sling - Multi Leg	Grade T 10mm x 1 leg 3.2 t	Assembly Area	B	25/03/2010	25/03/2010
4783892	NC801-005	Chain Sling - Multi Leg	Grade T 10mm x 2 leg 3.5 t @ 90°	Assembly Area	B	25/03/2010	25/03/2010
4783893	NC801-007	Chain Sling - Multi Leg	Grade T 10mm x 2 leg 3.5 t @ 90°	Assembly Area	A	20/11/2008	01/02/2010
4783894	NC801-013	Concrete Lifting Chain	Sur/Lift 10.0 t	Factory	B	26/03/2010	07/04/2010
4783895	NC801-014	Crane	Davit	Factory	B	26/03/2010	07/04/2010
4783896	NC801-015	Crane	Gantry	Factory	B	07/10/2008	07/01/2010

First Previous Next Last Print List



6. Use the print list button to generate a pdf report based on your preferred sorting or filtering criteria.

Customer Site01
Nobles Customer Pty Ltd.
46 Test Street
Dermoville, TC, 2635

TECH INSPECT
Lifting Equipment • Data Management

Water/Customer Pty Ltd
46 Test Street
Dermoville, TC, 2635

Barcode	ID Number	Test Cert.	Equipment Type	Description	Location	Status	Exp. Date	Comments
4783884	NC801-008	NAB5575	Wire Rope Sling - Single Leg	14mm 6 x 36 IWRC G1770	Assembly Area	B	20/11/2008	
4783885	NC801-009	NAB5582	Wire Rope Sling - Multi Leg	24mm 6x36 IWRC B 1770 with Soft Eye Each End	Assembly Area	B	23/02/2010	
4783886	NC801-004	NAB5583	Chain Sling - Multi Leg	Grade T 8mm x 2 leg 3.5 t @ 90°	Assembly Area	B	25/03/2010	
4783887	NC801-010	NAB5583	Wire Rope Sling - Single Leg	24mm 6x36 IWRC B 1770 with Soft Eye Each End	Assembly Area	B	20/11/2008	
4783888	NC801-011	NAB5583	Wire Rope Sling - Single Leg	24mm 6x36 IWRC B 1770 with Soft Eye Each End	Assembly Area	B	20/11/2008	
4783889	NC801-012	NAB5583	Wire Rope Sling - Single Leg	24mm 6x36 IWRC B 1770 with Soft Eye Each End	Assembly Area	B	20/11/2008	
4783890	NC801-003	NAB5585	Chain Sling - Multi Leg	Grade T 10mm x 1 leg 3.2 t	Assembly Area	B	25/03/2010	
4783891	NC801-005	NAB5585	Chain Sling - Multi Leg	Grade T 10mm x 2 leg 3.5 t @ 90°	Assembly Area	B	25/03/2010	
4783892	NC801-007	NAB5586	Chain Sling - Multi Leg	Grade T 10mm x 2 leg 3.5 t @ 90°	Assembly Area	A	20/11/2008	
4783893	NC801-013	NAB5586	Concrete Lifting Chain	Sur/Lift 10.0 t	Factory	B	26/03/2010	
4783894	NC801-014	NAB5586	Crane	Davit	Factory	B	25/03/2010	
4783895	NC801-015	NAB5586	Crane	Gantry	Factory	B	07/10/2008	
4783896	NC801-016	NAB5586	Crane	Jib	Factory	B	25/03/2010	
4783897	NC801-017	NAB5586	Crane	Jib	Factory	B	25/03/2010	
4783898	NC801-018	NAB5586	Crane	Jib	Factory	B	25/03/2010	
4783899	NC801-019	NAB5586	Engineered Product	Fork Type Fork Lifter	Factory	B	25/03/2010	
4783900	NC801-020	NAB5586	Engineered Product	Dry Acetylene Bottle Lifter	Factory	B	25/03/2010	
4783901	NC801-021	NAB5586	Engineered Product	Collected M2 x 2.0 t	Factory	Z	25/03/2010	
4783902	NC801-022	NAB5586	Engineered Product	Crane Clamp	Factory	B	25/03/2010	
4783903	NC801-023	NAB5586	Engineered Product	Crane Trolley	Factory	B	25/03/2010	

Key to equipment status
A: No Visual Defects; B: Satisfactory; C: Rectification required; D: Non-Conforming; Z: Could not locate
For Height Safety Equipment: P: Pass; F: Fail

A. NOBLE & SON LTD.
World Class Lifting Solutions

www.tech-inspect.com.au

Page 1 of 3



Services

www.tech-inspect.com.au



A. NOBLE & SON LTD.

TECH INSPECT

Lifting Equipment • Data Management

DETAILS

Close

LIFTING EQUIPMENT DETAILS

Equipment Code:	480002097	Test Certification:	NIB5950
Barcode:	220004	Manufacturer's Serial Number:	
ID Number:	10201-004	Status:	A - No Visual Defects
Product:	Grade T 8mm x 2 leg 201 @ 001		
Location:	Assembly Area		

COMMENT

SPECIFICATIONS

Grade:	Grade T
Size:	8
Size Units:	mm
Configuration:	2 Leg
Master Link:	Master Link
Shorteners:	Eye Create Chain Hoops
Bottom Fittings:	Eye Self-Locking Hook
EL Length:	7.5
EL Units:	m
WLL:	3.5
WLL Units:	Tonne @ 80

INSPECTION & TESTING SCHEDULE

Code	Description
TK000008	Visual Inspection - 8 Monthly
TK000018	Proof Load Test - 24 Monthly

INSPECTION & TESTING HISTORY

Code	Description
W0001021	Proof Load Test - 24 Monthly
W0001287	Visual Inspection - 8 Monthly

FILES

File Name: NIB5950.pdf

7. From the Equipment List click on the asset barcode to view the full detail

Details:

- Full specifications
- Inspection and/or testing schedule detailing when the last inspection/test was carried out and when the next inspection/test is due
- Inspection and/or testing history
- Files such as Test Certificates can be attached to the item and can be viewed and or printed as required

A. NOBLE & SON LTD.

A.B.N. 18 001 513 281
135 SOUTH GIPPSLAND HIGHWAY, DANDENONG SOUTH VIC 3175
PHONE: (03) 9706 9333 FAX: (03) 9706 9116 WEB SITE: www.nobles.com.au

CERTIFICATE NUMBER **NM B5950**

CERTIFICATE OF TENSILE TEST AND EXAMINATION

QUANTITY	DISTINGUISHING MARKS	DESCRIPTION	LOAD APPLIED	WORK LOAD LIMIT
1	NIB5950 WLL: 3.5t @ 60 DEG	8MM CHAIN ASSEMBLY - 2 LEGGED GRADE T SELF COLOURED 7 METRES CHAIN LEG LENGTH CONSISTING OF:- 1 X 10-7MM GR80 LARGE SERIES DELONG LINK 1 X SAFETY TAG 5/5 8MM MULTI LEG 4 X 7-8MM CONNECTING LINK NOBLES 14.08 METRES X 8.0MM ALLOY CHAIN 2 X 7-8MM GR80 SELF LOCKING HOOK 2 X 7-8MM GR80 GRAB HOOK NOBLES GAUGE MEASUREMENTS: DELONG LINK 90MM GRAB HOOK 30MM LATCH HOOK 60MM BEFORE AND AFTER TEST ADDITIONAL INSTRUCTIONS: MANUFACTURED BY TESTING ESTABLISHMENT <small>*When A. Noble & Son Ltd carry out proof tests on goods which are not their manufacture they are not responsible for the true integrity of the product if a prior test and result report requested by a competent person does not readily, any other savings in design or manufacture.*</small> <small>The Goods covered by this Certificate have been examined and tested in accordance with the specified requirements.</small>	69kN MASTER LINK ONLY 39kN EACH LEG DIRECT	3.5t @ 60 DEG

DATE OF TEST: 17/06/08

TEST SPECIFICATION: AS 3775.1/2-2004

OUR REFERENCE: 606758

CUSTOMER ORDER No.:

A LOAD OF AD AS SPECIFIED WAS APPLIED WHICH REPRESENTS 2 OF THE WLL. AFTER REMOVAL OF THE LOAD EACH ITEM WAS EXAMINED BY A COMPETENT OFFICER AND FOUND TO BE FREE FROM PERMANENT SET PLAY OR OTHER VISUAL DEFECT AND COMPLIES WITH THE REQUIREMENTS OF THIS TEST.

TO: NOBLES CUSTOMER PTY LTD.
 46 TEST STREET,
 DEMOVILLE
 TC 9635

NATA Accredited Laboratory
 Number: 484

This document is issued in accordance with NATA's accreditation requirements.

Approved for compliance with ISO/IEC 17025.

Approved Signatory _____
 Date

TECH INSPECT boards are also available and are ideal for those sites that use colour coded tags. The boards can be mounted in the area where the equipment is used and assist in instantly identifying if the equipment they are using is "in inspection".

Each Tech Inspect board can accommodate two types of equipment that may have a differing inspection schedule e.g. height safety equipment (6 months) and lifting equipment (12 months). The correct colour coding for each type of equipment is displayed on the board.

The board also displays when the last inspection was carried out on each equipment type and when the next inspection is due for each equipment type.

In this example lifting equipment is inspected at a frequency of 12 months and has a blue tag.

Height safety equipment is inspected at frequency of 6 months and has an orange tag.

Equipment that is carrying the wrong colour tag is easily identified.



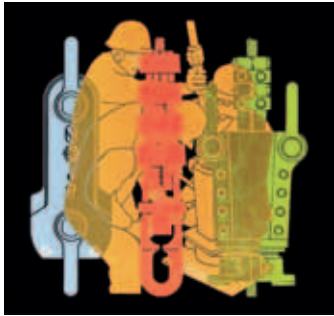
MINING SERVICES

Nobles offers a range of products and services for the mining sector, developed through long standing partnerships with open cut and underground mines across Australia.

Nobles understands the importance of uptime and reliability to our mining clients, and has a national network of engineers that are ready to help.

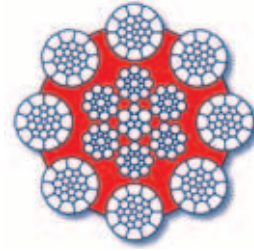
Beyond our extensive range of lifting and rigging products, we offer specialist mining solutions from world class suppliers including:

- Special wire rope from CASAR for mining applications
- Reliance Hexham mining rope attachments, skips, cages, head sheaves, specialised engineering services and manufacturing
- Non-destructive testing and pressure lubrication of wire rope on site
- Mine shaft monitoring systems
- Big lift planning and rigging systems manufacture

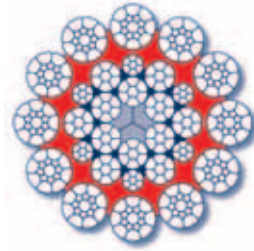


CASAR
Special Wire Ropes

TURBOPLAST M



MINEPLAST VM



OIL & GAS SERVICES

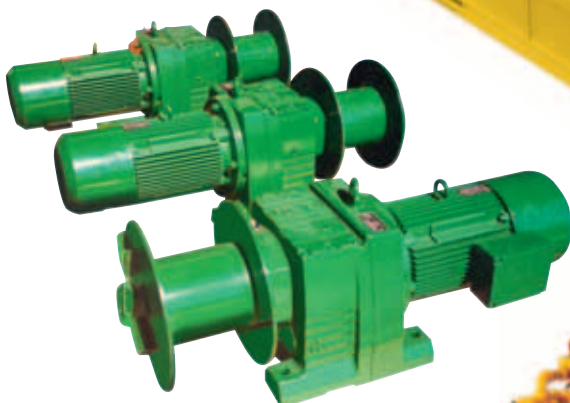
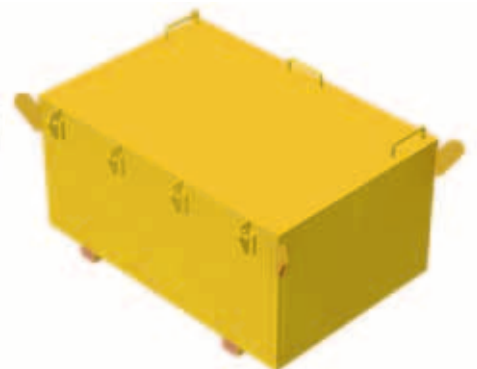
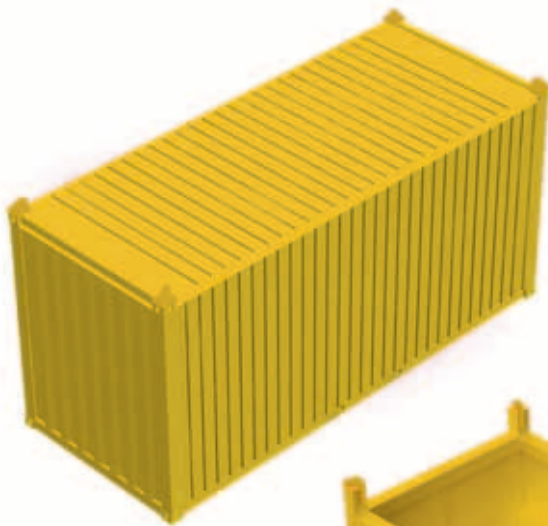
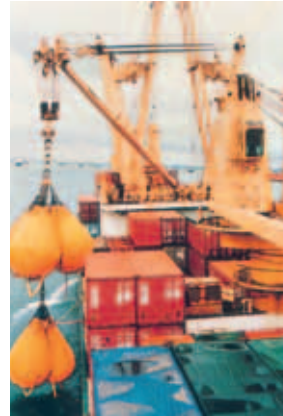
Nobles has been working with the Australian Oil and Gas sector since the 1960's, and is located with branches to service the Bass Strait, North West Shelf and Timor fields.

Nobles understands the importance of uptime and reliability to our oil & gas clients, and has a national network of engineers that are ready to help.

Nobles offer specialist offshore solutions from world class suppliers including:

- Water Weights testing
- Offshore equipment design and manufacturing
- Offshore rigging supply including DNV sling sets
- Hoists and Winches from Ingersoll Rand

Water Weights





Services

IN-HOUSE TESTING FACILITIES

Nobles have NATA accredited testing capacity to 1,000 tonnes. We have the testing facilities and expertise to test a broad range of lifting and rigging equipment. Both proof load and destruction testing services are available.

Nobles NATA accreditation is a further demonstration of Nobles commitment to provide quality. Our NATA accreditation ensures that lifting equipment tested by Nobles is in accordance with the relevant Australian Standard and on successful completion of the proof testing will be in a safe and serviceable condition.

Nobles NATA accreditation covers our in-house and mobile proof load testing machines and we can also provide NATA accredited certified visual inspections (CVI's) in Melbourne, Perth and Darwin. Our wire rope non-destructive testing (NDT) service is also accredited by NATA. This provides you, the customer, with further confidence that the services provided by Nobles are independently audited and accredited and are bench marked against international laboratory testing standards.



MOBILE TESTING FACILITIES



Nobles offer a fully NATA accredited mobile proof load testing service for lifting equipment in most areas. This compliments our already popular on site lifting gear inspections. Our mobile test machines have capacity to 30 tonne and a length of 6m.

We come to you anywhere

No more lost time having your slings and lifting equipment off-site for testing and certification. Your lifting equipment can now be tested on your site at your convenience.

With the growing need to provide workplace safety across industry Nobles can assist in keeping your lifting equipment in a safe and serviceable condition. We can provide a total lifting equipment management package including our Tech Inspect system, scheduled testing and inspection, repairs, technical advice and best-fit solutions for replacement of equipment as required.

Contact your nearest Nobles branch and let us manage your lifting equipment requirements.



WATER WEIGHTS

Water Weights

Water Weights bags are for providing a load, in place of dead weights, for load testing or ballasting. Water Weights is the first system to allow safe and practical use of water as a weight for load testing.

Flexibility

Water Weights bags are used for suspended loads or deck loads using any number of bags for loads up to 600 tonnes. Bags are made in standard sizes as in the table below, but special bags can be manufactured to any practical shape or size.

Economical

For transportation, the bags with load cells weigh approximately 1.5% of achieved load, thus keeping transportation costs, storage space and floor loading to a minimum.

Practical

In use the bags are the most practical method of performing load tests, with test loads being applied gradually, and a minimum of handling to achieve various loads, means time taken can be considerably reduced.

Safe

The bags themselves are fully tested to a minimum of 1.5 times their rated capacity.

Engineering

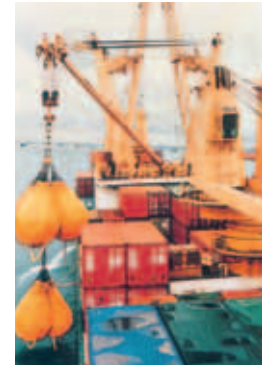
The load is always measured with a certified load cell allowing for 1% accuracy where required.

Specialised Water Weights products and services are used by Structural Engineers Construction Companies, Naval Architects and Engineers, Civil Engineers, and Logistics Management Companies for:

- Load Measurement
- Ballast and Counterweight
- Floor and Bridge Tests
- Water and Liquid Storage

Power Stations, Refineries, Factories, Crane Companies amongst others use Water Weights for testing in a wide variety of applications including:-

- Overhead Cranes
- Beams
- Gantries
- Elevators



Marine

Offshore Installations, Ship Building and Repair Companies, Shipping Companies and Docks and Harbours use Water Weights for the following testing applications:-

- Cranes
- Davits
- Derricks
- Winches
- Lifeboats
- Pad Eyes Industrial

Life Boat Testing

This system is designed to remove remotely the test overload in instances where the winching system cannot receive the craft in its proof load condition.

Water Weights 375kg lifeboat bags are filled in situ. On completion of the test the overload is removed by means of a remotely operated pump and manifold system.



Capacity		Size	Weight	Overall Size When Filled	
*tonnes	kg	Empty & Rolled in metres	*kg	Height in metres	Diameter in metres
1	1,000	0.9x0.56x0.56	23	2.3	1.2
2	2,000	1x0.6x0.6	45	3.5	1.6
2L	2,000	1x0.6x0.6	40	2.1	1.9
3	3,000	1.03x0.6x0.6	65	4.0	1.9
5	5,000	1.07x0.7x0.7	100	4.6	2.0
5L	5,000	1.07x0.7x0.7	95	2.5	2.7
10	10,000	1.1x0.8x0.8	135	5.8	2.5
12L	12,000	1.2x0.8x0.8	140	4.0	3.0
20	20,000	1.1x1x1	230	5.8	3.5
35	35,000	1.7x1.2x1.2	340	7.0	4.2

*** Note:** No more than 3 bags should be slung from a single point. Low Headroom Bags should only be slung singularly. Dimensions subject to change. Bags filled with less than their capacity will increase in length and reduce in diameter.

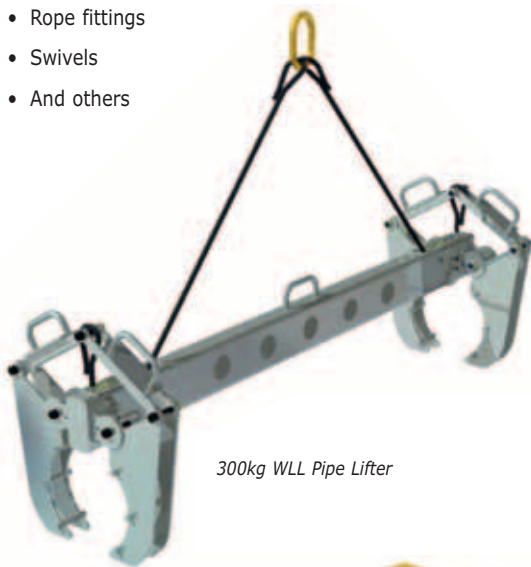
ENGINEERING SERVICES

Our Engineering Services Include:

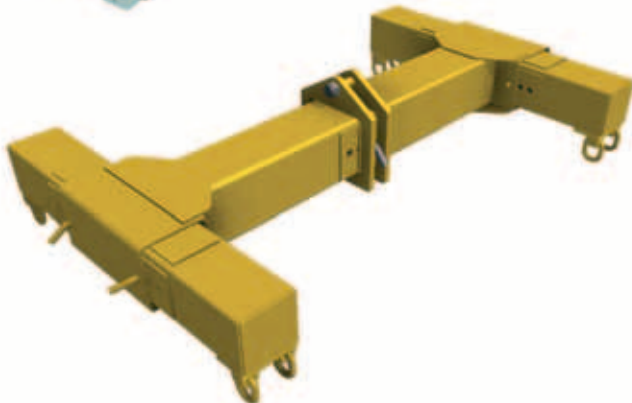
- Lifting Studies.
- Crane Assessments.
- Incident Reports.
- Assessing existing designs.
- Stripping down cleaning and inspecting.
- Assessing suitability for repair of damaged elements.
- Reassembling with new bearings, manufactured parts and replacement shackles and rigging equipment etc. as required.
- Performing NDT examination for cracks and or other flaws.
- Assessing dimensional wear against loading requirements.
- Proof load testing.
- Re-painting, zinc plating, galvanising or other surface treatments as required.
- Re-applying signage.

We repair customers own items including:

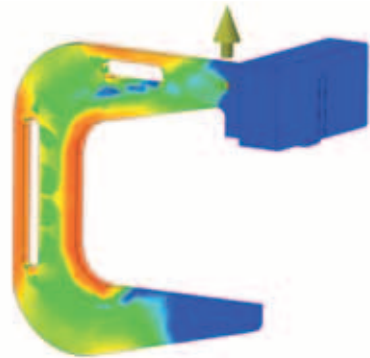
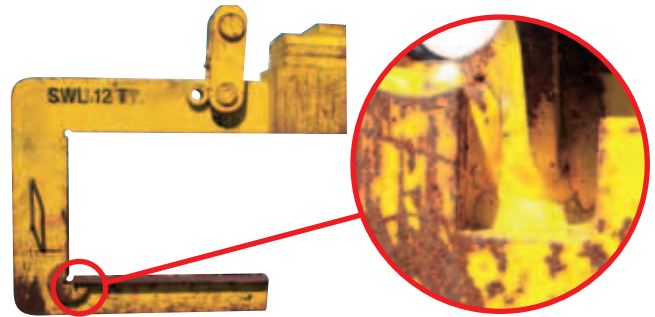
- Lifting Beams
- Pulley Blocks
- Rope fittings
- Swivels
- And others



300kg WLL Pipe Lifter



15 Tonne HV Motor Lifting Beam, 2.5m x 1.5m nominal size



The above pictures show a C Hook that has cracking in the welds due to poor design and construction. The lower picture depicts the profile of a C Hook designed by Nobles engineers using Finite Element Analysis (FEA). FEA highlights the stress areas which enables our engineers to design accordingly.



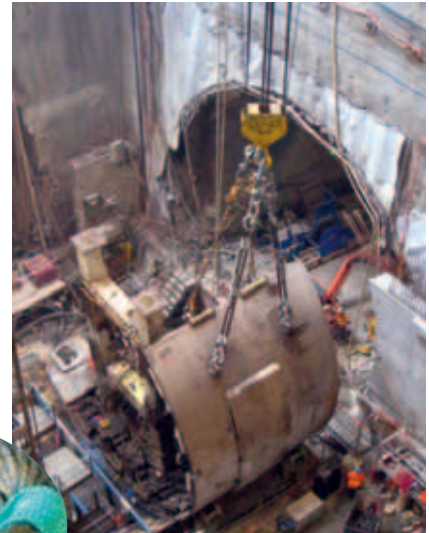
Nobles Engineers work with a metal smelter to supply heavy duty Ladle Hooks that are used to lift ladles of molten steel in a 130 tonne payload. The hooks are a unique design of plates and hot rivets that are able to effectively withstand the arduous environment.

BIG LIFT SERVICES

Nobles Big-Lift Division forms an integral part of Nobles Engineering. We have fully NATA accredited testing facilities to 1,000 tonnes capacity. The 1,000 tonne machine is capable of applying a load over a 35m length.

Nobles Big-Lift Division also has a 2,500 tonne wire rope swaging press making Nobles the leaders in large wire rope sling supply in Australia.

Our test facility is regularly employed not only for our own manufacture but in the testing of customers own equipment for proof load testing, destruction testing and R & D purposes.

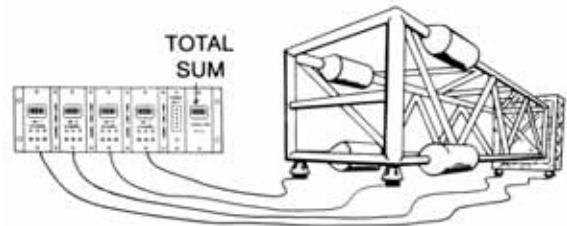
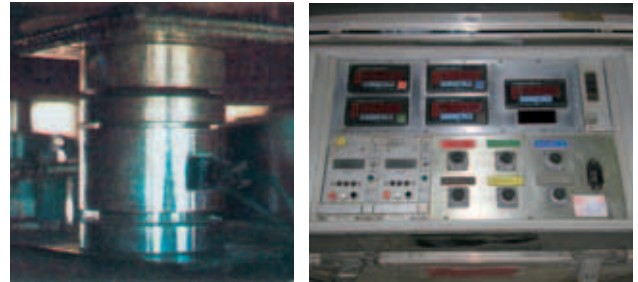




Services

LOAD CELL HIRE & CALIBRATION

The company has a fleet of load cells available for hire in varying capacities and configurations. All hire cells come with calibration certification and are transported in durable road boxes. Please contact your nearest Nobles branch for further details on load cell hire systems.



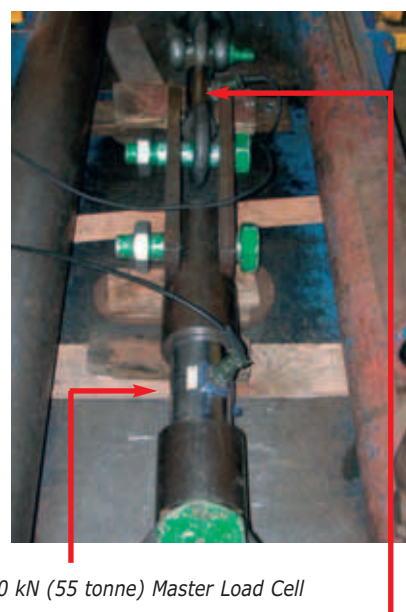
This system shows four of six 150 tonne compression load cells that are available for hire. This type of system can be used for weighing large modules to determine load distribution, load mass weight and centre of gravity.

NATA METROLOGY LABORATORY - Accreditation Number 2073

Nobles Electronics Division has NATA accreditation for the calibration of electronic load cell equipment. The laboratory complies with the requirements of ISO/IEC 17025 for 1.50 force measuring devices and 1.53 testing machines. We can verify the accuracy of your load cell and certify it in accordance with Australian Standard AS 2193.



Detailed reports are provided after each calibration.



Nobles 550 kN (55 tonne) Master Load Cell

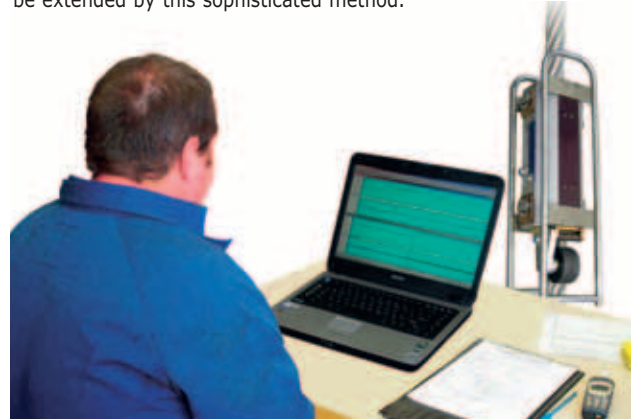
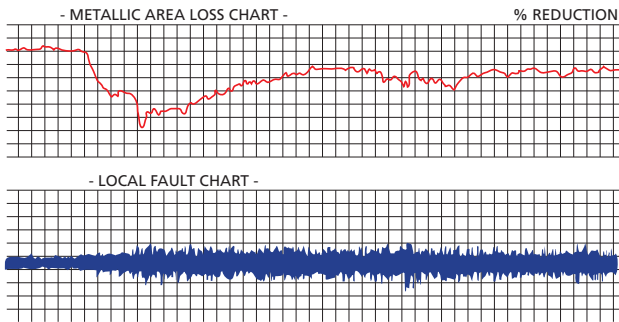
100 kN (10 tonne) Load Cell being calibrated

Readouts from both Load Cells are compared and any errors are noted in the cell being calibrated. The cell being calibrated is then respanned to correct the errors.

NON DESTRUCTIVE WIRE ROPE TESTING

This method of inspection of wire ropes has become part of the mining industries standard requirements for over 20 years. An electromagnetic instrument is used to non-destructively examine the rope. It incorporates a sensor head that is able to induce a magnetic field in a section of rope that is located within

the instrument. Changes in the metallic field enable a chart to be produced showing changes in metallic cross-sectional area and any wire breaks or other anomalies. Life of costly wire ropes may be extended by this sophisticated method.



WIRE ROPE PRESSURE LUBRICATION

Wire rope lubrication is a service we offer in most areas. This is an option to our crane rope inspection service. Re-lubrication of a crane rope is often an excellent option particularly for extending the life of older ropes.

Nobles uses pressure lubricators that ensure lubricants penetrate right through to the core of the rope, not just the visible exterior.

We offer our own range of Nobles Wire Rope Lubricants and Lanotec lanolin based lubricants, ensuring that the lubricant is best suited for your rope, application and the installed environment.



LIFTING EQUIPMENT REPAIR

Lifting equipment inspection and repair services are available in most areas. We will inspect your equipment, identify any problem areas, repair the item in question and carry out a proof load test. A range of standard lifting equipment is also offered for hire in some areas. Common items such as chain and lever hoists, beam clamps, snatch blocks and creeper winches are usually available.

